

**Miele**



**Save \$200\***  
on selected Miele laundry appliance package

Package includes: WCA 020 washing machine, TCB 140 dryer and WTV 501 stacking kit = **\$3,248**

\*Terms and Conditions apply.

Miele special offer for Finbar apartments only

**20  
YEARS**

German engineered and tested to the equivalent of 20 years' average usage.  
Terms and Conditions apply. Visit [miele.com.au/quality](http://miele.com.au/quality)

\*\*During development phase of the displayed product series washing machine W1 and dryer series T1, Miele has tested the functionality of core components in durability tests to simulate 20 years' average use within an average household. Individual products are likely to require servicing from time to time and may require replacement of core components to maintain them in a serviceable condition. More: [Miele.com.au/quality](http://Miele.com.au/quality)



## Quality Ahead of its Time

Your needs are the DNA of our appliances

In order to create long-lasting reliability, we combine constant innovation with expert craftsmanship – the meticulous devotion to detail that makes sure, our machines are built to last and to answer your every need.

That's why our appliances are designed to work intuitively together, to make every task seamless and effortless. Whether it's laundry, dishwashing, refrigeration, kitchen appliances or floor care, everything we do is to improve your household experience.



### Save \$200\*

on selected Miele laundry appliance package

#### Package includes:

WCA 020 washing machine, TCB 140 dryer and WTV 501 stacking kit = **\$3,248**



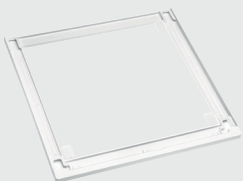
#### WCA 020 washing machine

- 7 kg load capacity
- EasyControl Yellow / 7-segment display
- Cold water connection
- WCS Water Protection System
- 12 wash programmes
- 1400 spin speed
- Cap Dosing
- Honeycomb Drum
- AddLoad
- 24 h Delay Start
- 4 Star Energy / 4 star WELS water rating
- Programme Eco 40-60
- Water I / wash 68



#### TCB 140 WP heat pump dryer

- 7 kg load capacity
- Display 7 segment DirectSensor Yellow
- 12 drying programmes
- Pre-ironing
- Delay Start
- Bed Linen programme
- FragranceDos
- 9 star energy rating
- 1x Aqua Fragrance Flacon



#### WTV 501

- Slim kit (2.5 cm).

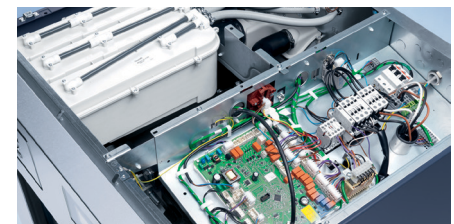
\*Terms and Conditions apply.



Exclusive to Miele

#### Honeycomb Drum

Gentle laundry care - Never hand wash again.



#### Miele Made Electronics

Quality, serviceability and peace of mind.



Exclusive to Miele

#### PerfectDry

Precise drying thanks to mineral sensors.



#### EcoDry

Low energy consumption and short drying times through the entire life of the dryer.

**Contact:** Please email your order to [waprojects@miele.com.au](mailto:waprojects@miele.com.au)

**Miele Experience Centre Perth** 205-207 Stirling Highway, Claremont, WA 6010.

**Miele Experience Centre Karrinyup** Shop SP1236, Level One, Karrinyup Shopping Centre, 200 Karrinyup Rd, Karrinyup WA 6018.  
(08) 9286 7800 M 0499 705 318 [miele.com.au](http://miele.com.au)

#### Conditions:

1. Miele exclusive offer for Finbar developments only.
2. Delivery must be to a Finbar development site address.
3. Payment in full by EFTPOS or credit card.
4. Removal and installation can be arranged for an additional cost. Installation cannot be on a plinth.